

THE EDGE

NOVEMBER NEWSLETTER

An Urban Artist Village (AND Gallery) 611 Main Street, Winnipeg MB, R3B 1E1

HELLO FRIENDS!

WE have some exciting things coming up at THE EDGE and hope you can join us

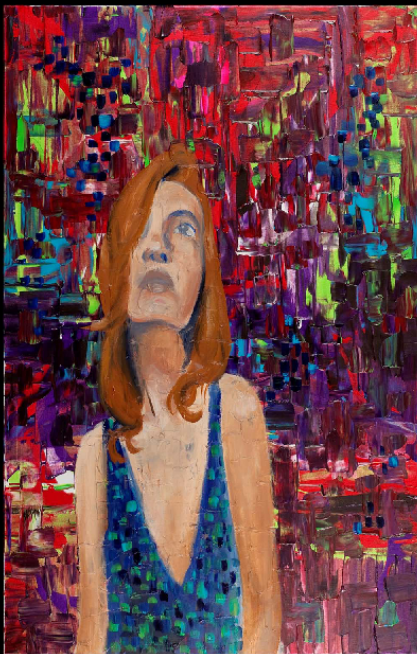
FIRSTLY – ONE OF WINNIPEG'S NEWEST AND EXCITING ARTISTS

JESS STACEY SOKULSKI

HAS A SHOW COMING UP! (with DAN THE CARVER!)

OPENING – First Friday November 25, 2011 from 7 – 11

Come and check her out, Jess has been one of the most prominent members of the Clay Center, and she PAINTS and SINGS!



JESS STACEY SOKULSKI

ART SHOW

NOV25TH – DEC 8TH 2011

THURSDAY 11-7

FRIDAY 11-7

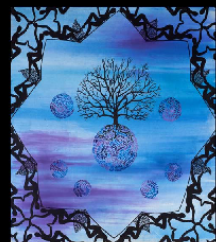
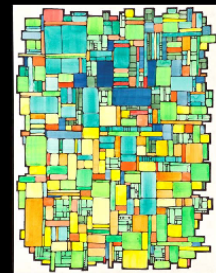
SATURDAY 2-8

LIVE PAINTING BY THE ARTIST

TUESDAY & WEDNESDAY 2-6

ALSO SHOWING WORK BY DAN THE CARVER

AT **THE EDGE** GALLERY
611 MAIN ST.



Edge HOLIDAY SALE!

Have you missed all the deadlines for the Holiday sales this year? NOT TO WORRY! We will be having a sale and exhibition! It will run Thursday dec 1, 12 – 7pm, Friday December 2 (ON a first Friday) from 12 – 10 pm, and Saturday December 3, from 2 – 8 pm.

Deadline to apply has been extended until Friday November 25!

Price for table is \$50 straight up and we will NOT take a commission! Sharing tables is allowed and encouraged... THE MORE the MERRIER!

If your interested, Please submit pictures of work to: elise@edgevillage.com



**HANDMADE CERAMICS AND WOODCARVINGS
RIGHT FROM OUR STUDIOS, BRING THE KIDS AND
COME PAINT YOUR OWN CERAMIC ORNAMENT**

OTHER LOCAL FINE ART ISANS INCLUDING THE LOCAL ARTIST COLLECTIVE
"PLACES FOR PEANUTS"
AND BEAUTIFUL HAND - CRAFTED BIRDHOUSES FROM OUR FRIENDS
AT THE RED ROAD LODGE

THURSDAY DECEMBER 1 FROM 11AM - 7PM
FRIDAY DECEMBER 2 11AM - 10PM
SATURDAY DECEMBER 3, 2PM - 8PM

THE EDGE GALLERY IS
LOCATED AT 611 MAIN ST.
(204) 880-0771
WWW.EDGEVILLAGE.COM

DO NOT FORGET ABOUT THE EDGE RETAIL SHOP – WE HAVE WORK MADE BY LOCAL ARTISTS AND MEMBERS ON SALE ALL YEAR ROUND!

RENEWED EDGE memberships are now available and have additional benefits!

Membership Rewards:

- 25% on gallery rental
- artist profile featured on website
- artwork showcased on virtual gallery (online and onsite)
- Enter work for sale at the Edge Member Retail Shop (20% commission)
- \$5 off the Main Street Clay Centre Drop-in on Saturdays
- 10% off contract lessons for the Main Street Clay Centre, also Saturdays
- Free studio time in the Gallery during our “set business hours” ***



REMINDER FROM MAIN STREET CLAY COMMUNITY CENTER:

WE are open and renting Studio Space \$95 a month CHEAP!

DROP-IN Ceramics Saturdays 2 – 6pm = \$25 (includes EVERYTHING!) NO COMMITMENTS

We do contracted lessons, workshops, birthdays..you name it!

Come visit us at

www.mainstreetclaycommunitycenter.com

Or call Elise at (204) 880 - 0771

For all of those asking about Serena.... I FOUND HER! Come and see her here!

Going Postel" music and Art with Serena



When:Monday, December 5, 2011.Time7:00pm until 10:00pm..Where 318 Ross Avenue
Description: Greetings Friends, I've been out of sight for quite a while and miss terribly what happens when I sing for you! Please join me early December and share a night of music (originals old and new, covers and of course sing-o-longs ;) and art!

Monday December 5

7 - 8 Mingler and Open Art Auction, 8 Concert, \$10

You can get tickets at the door, but space is limited so you could write me for FREE DELIVERY! (if you're ordering two or more tickets, I'll bring them to you!)Can't wait!!!

info@serenapostel.com



<http://www.facebook.com/#!/events/215994511805584/>

**STAY TUNED FOR AN IMPORTANT ANNOUNCEMENT
ABOUT WHAT IS COMING UP IN FEBRAURY!**

TAKE CARE AND STAY WARM!

- **LOVE FROM THE EDGE!**